



OCPS
OFFICE OF CLINICAL AND
PREVENTIVE SERVICES

IHSTribal Community Health Aide Program Updates

August 1, 2018



Overview

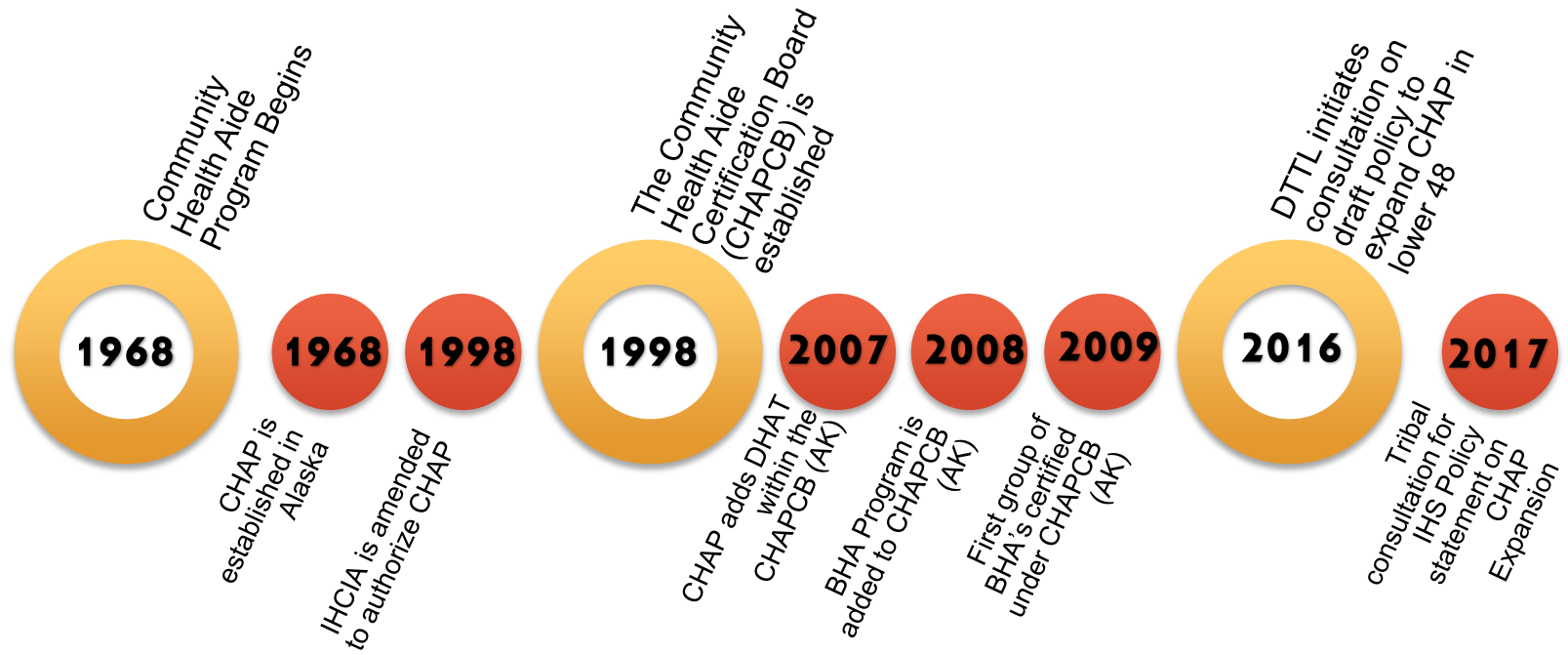
- Background
- IHS CHAP Program Updates
- Next Steps
- Recommendations
- Discussion



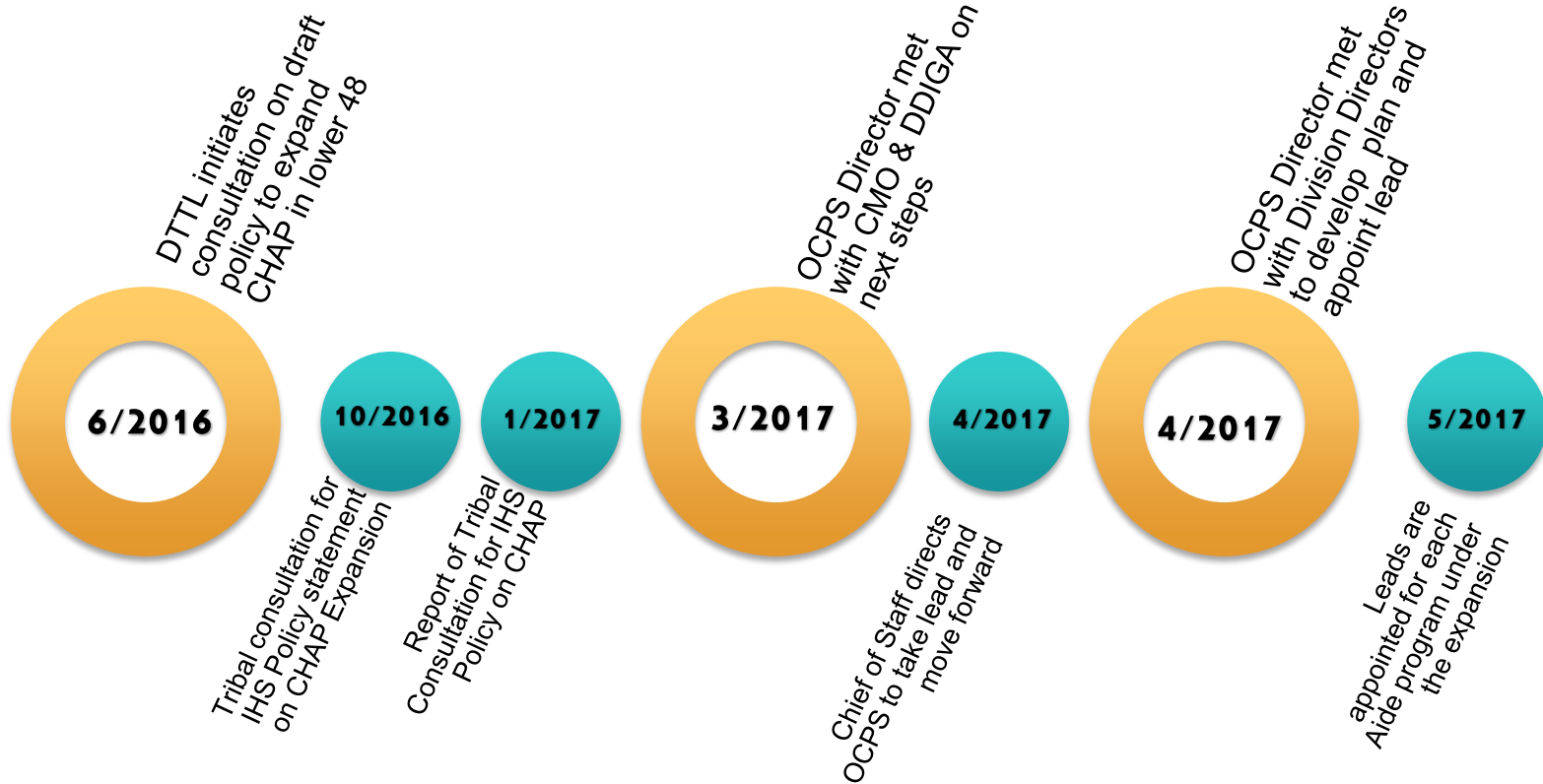
Background

- Timeline
- Alaska CHAP vs. IHS CHAP
- Behavioral Health Aide (BHA)
- Community Health Representative (CHR)
- Dental Health Aide Therapist (DHAT)

National Timeline



IHS Internal Timeline



CHAP Expansion Framework

Phase I: Assessment

What does the system currently look like?



Phase II: Design

What will the program look like?



Phase III: Implementation

How do we roll it out?

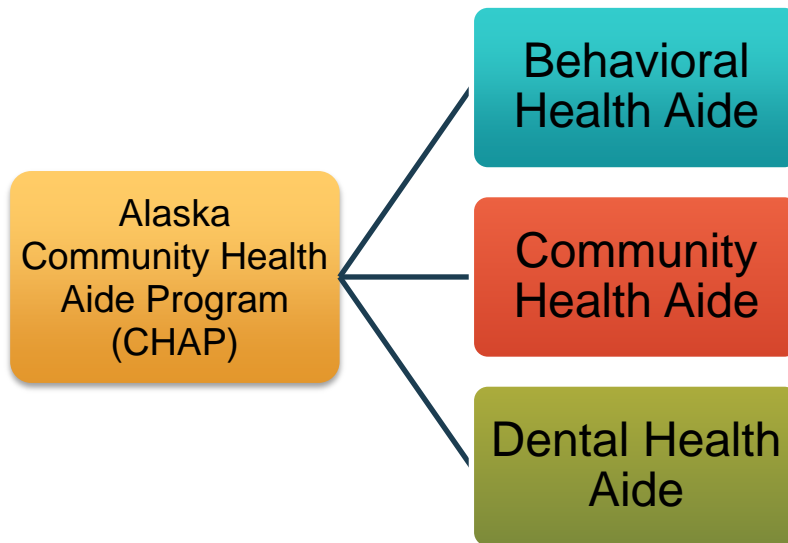


Phase IV: Evaluation

How well is the program performing?

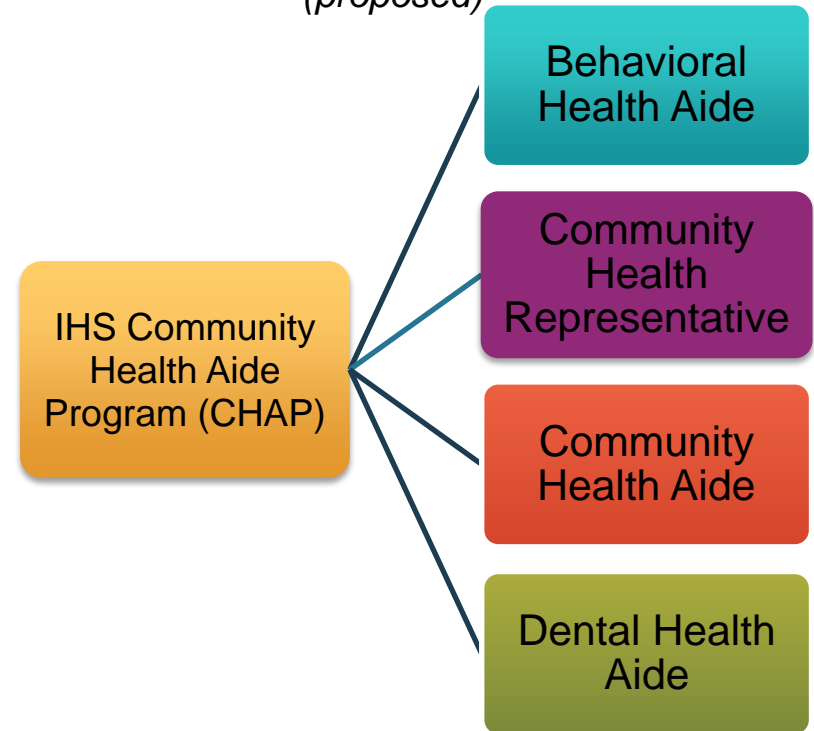
Alaska CHAP & IHS CHAP

Alaska CHAP



IHS National CHAP

(proposed)





Behavioral Health Aide

- Tiered-Practice Level
- Exploring certification through Tribal Colleges & Universities (TCU's)
- Centers for Medicare and Medicaid Services (CMS) Reimbursement
- Explore Regional Certification

Community Health Representative

- **Background**
 - Established in 1968 by Congress
 - Majority of paraprofessionals within the lower 48 are CHR'S
 - Come from our local communities & immediate surrounding areas.
 - Current workforce in Indian Country is 1,400 representing more than 250 tribes in 12 service areas.
- **Future Direction:**
 - Adapt existing CHR model to mirror the CHAP model (Alaska)
 - Various tiers of paraprofessional services
 - Goal to establish billable services



Dental Health Aide

- Tiered Model
 - DHA I
 - DHA II
 - DHA III
 - DHAT
- IHCIA & DHAT
- Certification
- Training Programs



Next Steps

- Charter Development
- Stakeholder Engagement
- Workgroup Formation

Contacts

- Dr. Chris Halliday (OCPS/DOH)
 - Dental Health Aide Therapy Program
 - Christopher.Halliday@ihs.gov
- Georgianna Old Elk (OCPS/DBH)
 - Community Health Representative Program
 - Georgianna.OldElk@ihs.gov
- Minette Wilson (OCPS/DBH)
 - Behavioral Health Aide Program
 - Minette.Wilson@ihs.gov



Discussion